

Yn agored a blaengar - Open and enterprising

**Contact Us:**

Regeneration Team,  
Powys County Council, County Hall,  
Spa Road East, Llandrindod Wells,  
Powys, LD1 5LG.

Tel: 01597 827656

Email: [invest@powys.gov.uk](mailto:invest@powys.gov.uk)

[www.growinpowys.com](http://www.growinpowys.com)



<https://www.facebook.com/GrowInPowys>



<http://www.twitter.com/growinpowys>



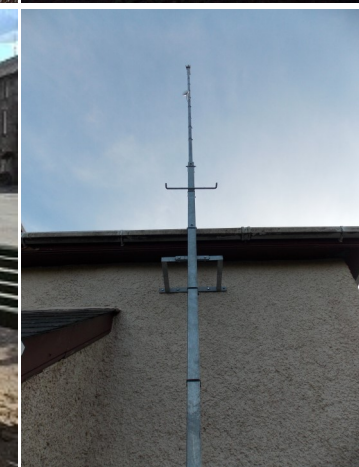
Grow in Powys



SCAN ME



# RURAL BROADBAND



## **Alternative broadband solutions.**

The roll out of superfast fibre broadband has provided much better internet connectivity for many in Powys but for some rural locations alternative solutions are required.

Community led schemes can often help residents and businesses work together to develop solutions that best fit the needs of their local area.

Support is available through Welsh Government's Superfast Cymru programme. Funding is potentially available through their Access Broadband Cymru scheme (ABC) which can help part fund these schemes and sometimes cover the installation cost (but not the monthly subscription fee).

## **Examples of solutions available:**

- **Community Fixed Wi-Fi Systems ...**

Are becoming more common and can deliver stable 30mb—100mb internet connections over large areas. Particularly useful in relaying connections across large open areas. Typically the system would be based around a village linked to a fibre network and capable of broadcasting a few miles beyond the settlement. This example was successfully deployed at Crai in the Brecon Beacons National Park ([www.growinpowys.com/crai-project-uk](http://www.growinpowys.com/crai-project-uk))

- **Community Fibre Networks...**

Are usually entirely owned by the community themselves through a community interest company and is a network independent of the Openreach network (BT). The project requires the investment of the community in terms of time, finance, and resource to install the fibre network and the cooperation of landowners to provide "wayleaves

for the installation of cable on their land." Quite new in Wales but several schemes are underway ([www.myfi.wales](http://www.myfi.wales), <https://b4rn.org.uk>)

- **Satellite Broadband...**

Services delivered via a satellite receiver and dish. Usually charges include a one-off fee to install broadcast equipment and a fixed term contract paid by a monthly subscription.

- **Mobile Networks...**

Service delivered through a sim card for devices or a plug-in USB dongle device. Speed and connectivity dependent on the network provider and availability of their mobile signal at the locations you require. Worth checking the availability of mobile signal with provider in the first instance.

## **Organising a community led scheme.**

Advice and support is available through the council's Regeneration service. A guide on how to organise a community for a community led project can be downloaded from our website at:

[www.growinpowys.com/crai-project-uk](http://www.growinpowys.com/crai-project-uk)

There's also information and advice for businesses and community organisations at: <https://www.growinpowys.com/digital>

## **Help is out there...**

Welsh Government Superfast Broadband;

<https://beta.gov.wales/go-superfast>

Superfast Business Wales ;

<https://businesswales.gov.wales/superfastbusinesswales/>